

Unlocking a SL55

Tools Needed

1. wire (I used a phone cable wire)
2. tweezers
3. Minimum intuition of a chimp.

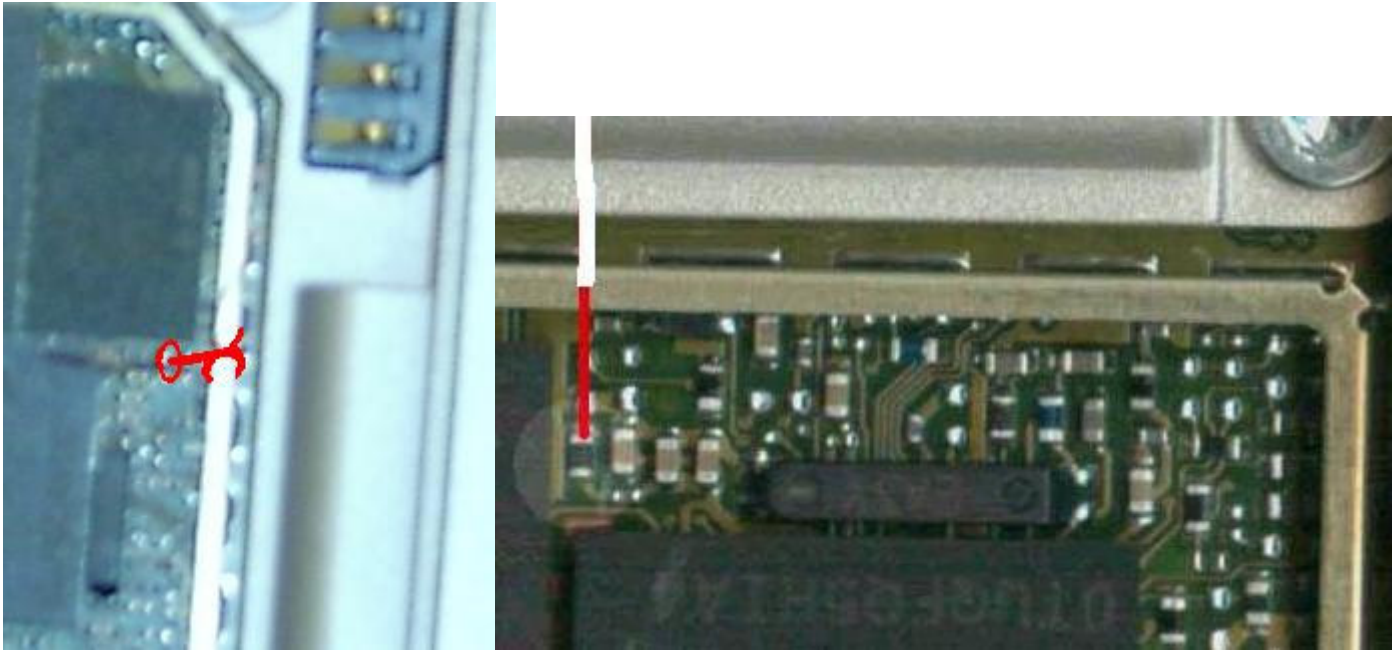
1. Remove the metal plate where imei sticker is located. This metallic plate pops right off.

2. Strip the cat5 cable to the smallest wire. And loop the wire through the very small hole to make a knot. Tie it like a shoe lace. Make sure its tight. Needs to make contact with the metal railing



2. Next is the most important part. After the knot is made cut the wires to assure they don't touch something else.

3. Next leave enough wire to connect to the test point. Connect your wire to the test point. Make sure it makes contact.



Here is a clear picture of where your wire should connect to. This cable needs to GND it.

4. After that is done put battery back on and run Freia 15.

5. Once in freia

- Select SL55.
- Then go to unlocking options and choose
 - "direct unlock also saves map"
- Then click on "Use Original imei"

- Your phone should now be unlocked.

This method worked for me.

I take no credit in coming up with this fix, this information I got from the [GSM-FORUM](#). (thanks to Chris02)

Brought to you by **Boriz_Spider**